

A-Alert Driving School Btw lesson overview

Lesson 1

Lesson 1 starts with the basics. Going over car controls, making turns, stop positions, identifying intersections and checking rearview mirror every 6-8 seconds.

Car controls: Learning where controls are located before entering the roadway.

Making turns: We teach Hand over Hand steering for best control



Always start the turn with the opposite hand of the direction you are turning. Ex. Turning left begin by moving the right hand to the top of the wheel and cross over with the left hand.

Stop position: Stop before the stop line, if no line, stop before the sign or crosswalk whichever comes first.

Intersections: Students will work on identifying type of intersection they are approaching from ½ block away.

Lesson 2

Lesson 2 reviews procedures from lesson 1, learning about one way streets, practice backing up straight, and country road driving.

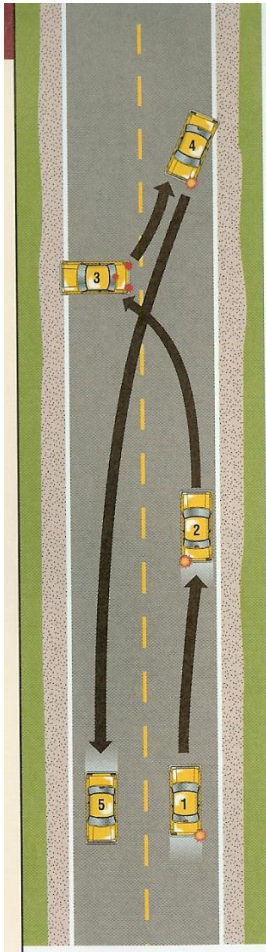
Lesson 3

Lesson 3 is city driving. Learning to turn at busy intersections, traffic lights, lane changes and Roundabouts.

Lesson 4

Lesson 4 reviews city driving, teaches y-turns and hill parking.

Y-Turns:



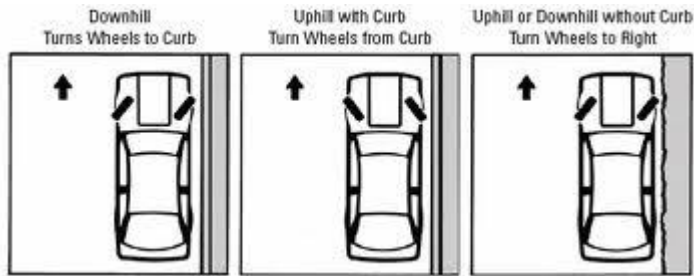
Step 1: Signal right check blindspot and pull over to the right.

Step 2: Signal left check traffic and turn Perpendicular to curb.

Step 3: signal right, check traffic and back to a 45 degree angle.

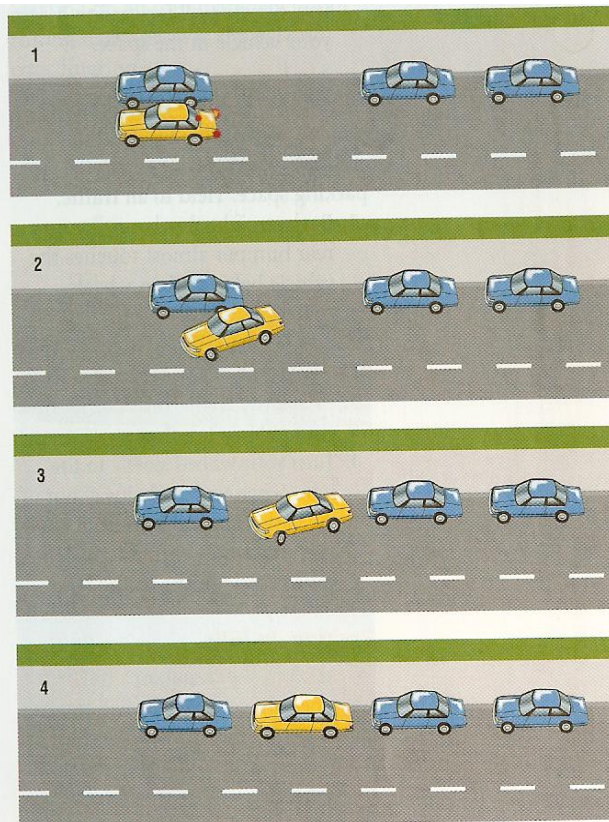
Step 4: Signal left, shift to drive and drive into your lane.

Hill parking:



Lesson 5:

Review Lesson 4, learn parallel parking and perpendicular parking.



Parallel parking:

Step 1: Signal right 100 ft. before car you are parking behind. Line up back bumper to back bumper.

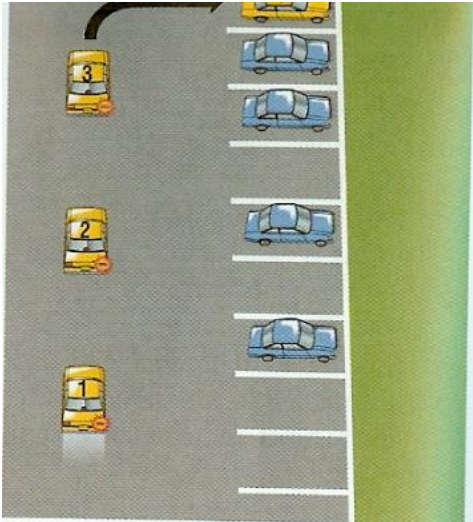
Step 2: turn wheel all the way to the right and back until you line up your steering wheel to their back bumper.

Step 3: Straighten wheels and back until your front bumper is even to their back bumper.

Step 4: Turn wheel all the way left and back into spot in between both cars. Straighten

wheel, set parking brake and shift to park.

Perpendicular parking:



Step 1: signal when approaching space.

Step 2: when you can see down the opposite lane line of the car you are parking next to begin turning into your space. Counter steer to straighten in your spot. Set parking brake and shift to park.

Lesson 6:

Freeway driving if time permits, review maneuvers and a mach road test.